

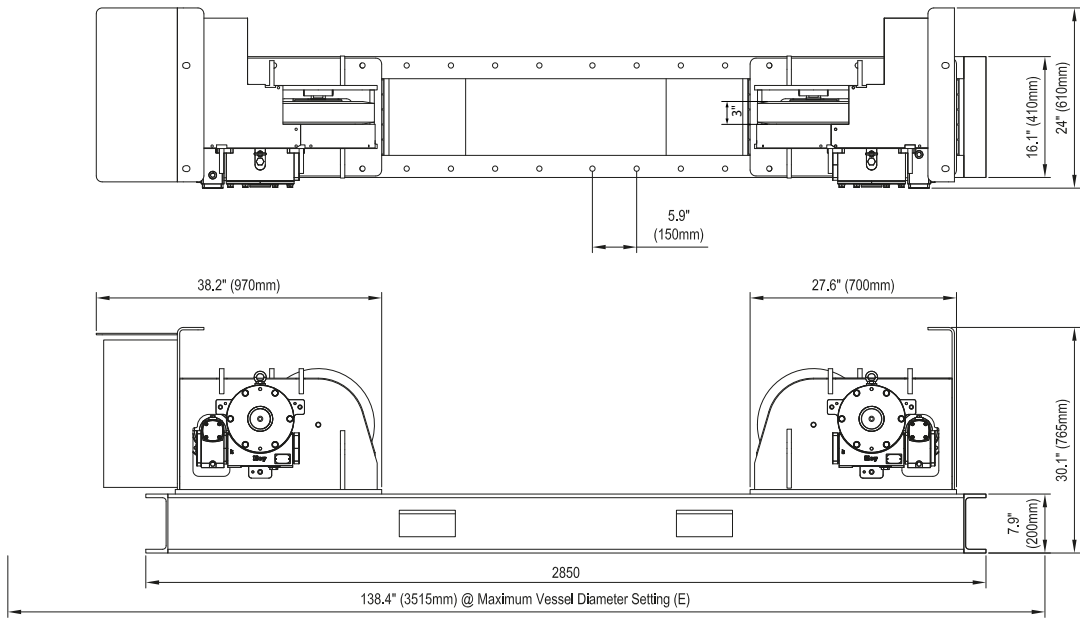
Stackable Design



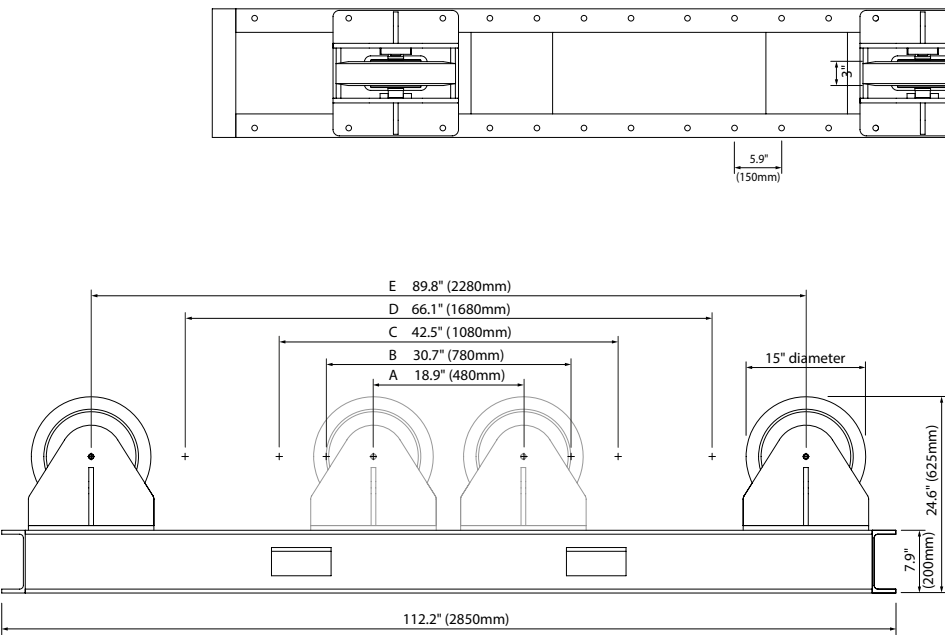
Specification

Model	KP CR10 Conventional Rotator Set (Drive and Idler)
Safe Working Load - Drive Unit	5 tonne
Safe Working Load - Idler Unit	5 tonne
Maximum Load Carrying Capacity - Set	10 tonne (1 Drive & 1 Idler)
Rotation Capacity, Drive Unit	15 tonne
Wheel Centre Distance	18.9, 30.7, 42.5, 66.1, 89.8in (480, 780, 1080, 1680, 2280mm)
Vessel Diameter Capacity	13.8in to 196.9in (350mm to 5000mm)
Rotation Speed Range	5.5 to 55.1 in/min (140 to 1400 mm/min)
Tyre Type	Polyurethane, 95A durometer shore rating
Wheel Size	15in diameter x 3in wide (381mm x 76mm)
Overall Height to Top of Tyre	24.6in (625mm)
Remote Pendant Type	Plug & Socket Five Push Button Control (forward/stop/reverse/speed control/e-stop), 50ft (15m) cable
Rotation Drive Motors	2 x 0.55kW
Primary Input Power	110 V, 1 Phase or 380/480 V, 50/60Hz (optional)
Input Current at Rated Load	7.3amp (110 V) or 5.5amp (380/480 V)
Overall Length & Width - Drive	112.2in x 24in (2850mm x 610mm)
Overall Length & Width - Idler	112.2in x 16.1in (2850mm x 410mm)
Weight - Drive	1488lb (675kg)
Weight - Idler	882lb (400kg)

Drive Rotator



Idler Rotator



Wheel Setting Workpiece Diameter Range

Setting	Range
A	13.8" (350mm) - 31.5" (800mm)
B	31.5" (800mm) - 55.1" (1400mm)
C	51.2" (1300mm) - 86.6" (2200mm)
D	86.6" (2200mm) - 141.7" (3600mm)
E	126" (3200mm) - 196.9" (5000mm)